

Developing New Products with Compliance in Mind

Steps to consider throughout the process

Presented by Sandra Gebauer Kelly
Director of Regulatory and Scientific Affairs, North America



Selerant Company Background



27

Years in business

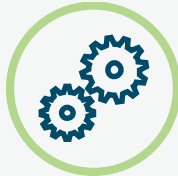
Founded in 1990.



200

Global customers

Nestle, Bacardi and Brown-Forman, to name a few.



Process PLM Pioneers

Launched web-based PLM software DevEX in 2003.



35%

YoY growth

Privately held & profitable. Continuous reinvestment in R&D and Quality.



350

Global resources

Extensive in-house professional services team across 4 continents.



Global presence

Offices in Europe, United States, Asia and Australia.

Process Industries Served



Food & Beverage



Specialty Chemicals



Personal Care

Customer Sampling



Food &
Beverages



Personal
Care



Specialty
Chemicals



Selerant PLM System – Core Modules



Innovation Process
Management



Product
Development



Regulatory
Compliance



Product Data
Management

Introduction to Compliance

- All food manufacturers know that regulatory compliance is a mandatory and crucial part of new product development
 - Recipes, and the raw materials that comprise each recipe, must undergo several different compliance assessments to ensure that the product can be legally sold in the intended countries of sale
 - Keeping compliance top of mind throughout the innovation process will produce favorable results
- Performing compliance activities before the project starts is highly beneficial
- Creation of a compliance strategy is highly recommended



Compliance Strategy

- › Building a solid compliance strategy and integrating with a PLM system will move your business forward efficiently, accurately, and quickly
- › It will keep your consumers safe
- › Knowing when to perform compliance assessments and who is responsible is the key
- › Have representation at business initiative planning meetings so you are aware of upcoming projects that might require ingredient approvals or use level changes



Types of Compliance to Consider

- Determine the compliance types needed to ensure your products are fully compliant
 - The types may depend on your product categories
 - Don't take for granted that you haven't had issues
- **Validate your data!** It must be complete and current for the countries of sale
- Use automated data collection tools to obtain data to address gaps and legislation updates (example: added sugars) from suppliers

Compliance Checklist

- ☒ Additives
- ☒ Micro
- ☒ Contaminants
- ☒ Pesticides
- ☒ Allergens
- ☒ Raw Materials
- ☒ Labels
- ☒ Product Standards
- ☒ Other

Who Should Perform Compliance Assessments?

- Determine who is the best informed and qualified to perform specific compliance checks (Regulatory, Quality, Product Developers)
 - Consider a Product Developer check early on to reduce the dreaded **compliance loop**
- Develop processes and workflows for efficient communication and to reduce the duplication of efforts
- Ensure all aspects of compliance are covered by dedicated resources
- Determine who is responsible for monitoring legislation changes, updating data, performing impact assessments to recipes, raw materials, labels, etc.

Polling Question #1

Does your company perform compliance checks during the formulation stage?

The Problem with Last Minute Compliance

- Don't get to the finish line and find that your product is out of compliance
 - Waste of valuable time & resources
 - Jeopardizes launch dates
 - Frustrates project teams & leadership
 - Decreases competitive advantage if late to market
- Timing is everything!



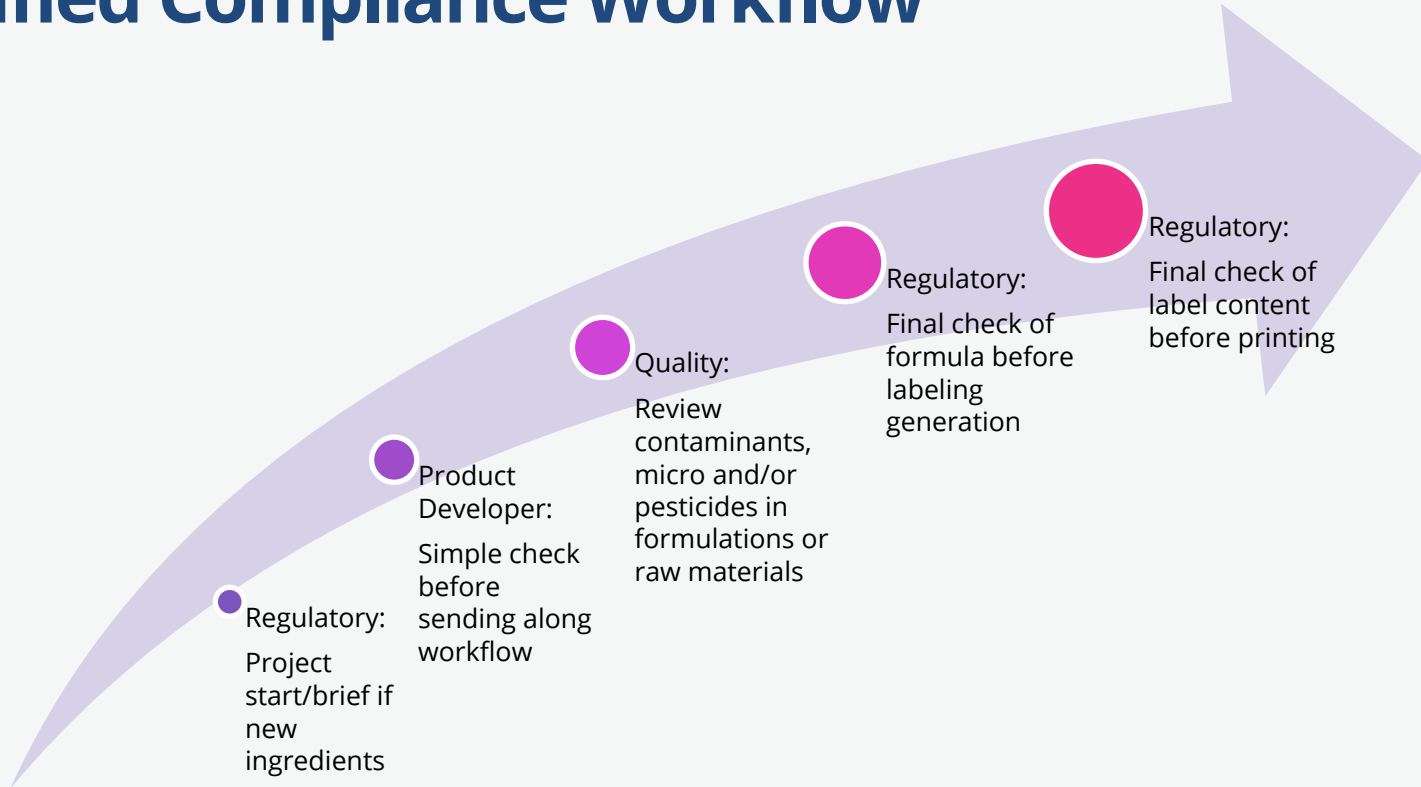
When to perform Compliance Assessments

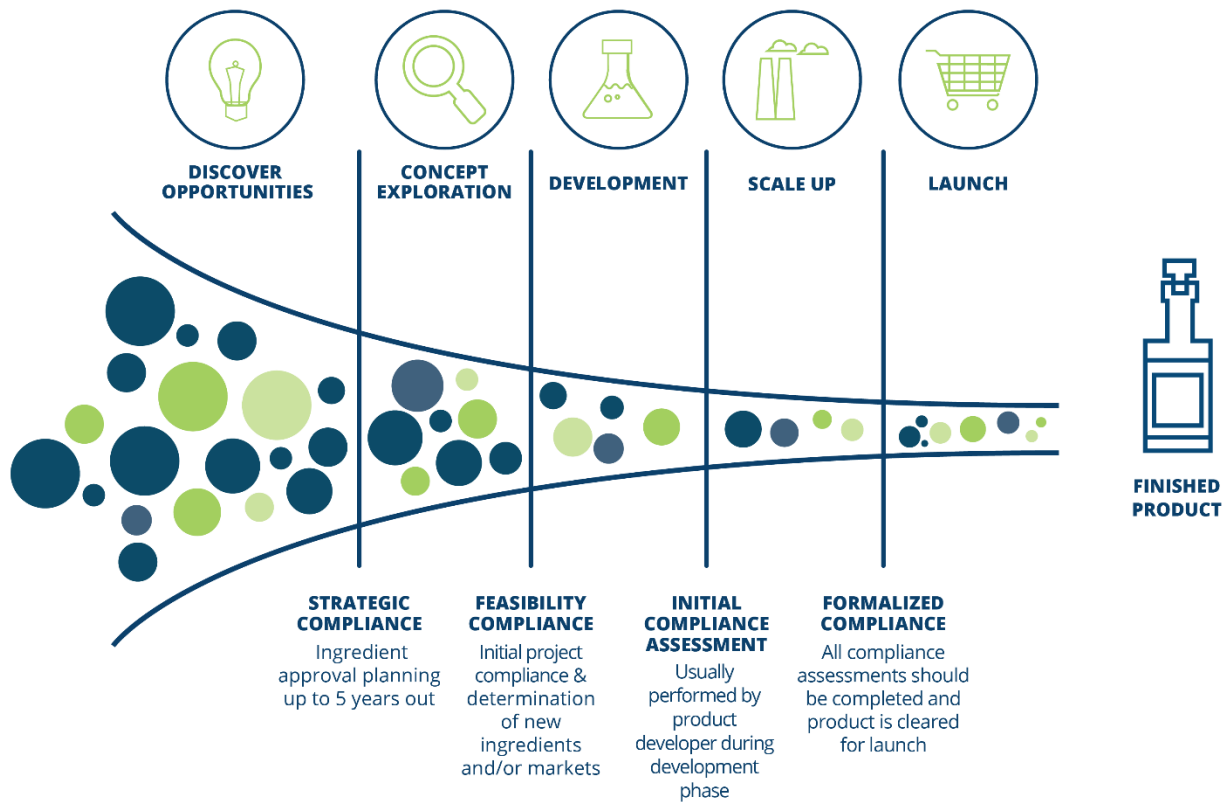
- ▶ Early and at key points throughout the development process such as:
 - During the initial phases of a project if there are **unique ingredients** or a **new country of sale**
 - Before plant trials (save money, effort and production time if not compliant)
 - Before product labels are printed (costly if formula changes occur)
 - Before launch to ensure label compliance
- ▶ Utilize material and formulation status management along with workflow tools to reduce the number of repeated unnecessary compliance checks and increase confidence if formulations are not editable after the review is complete
 - Setting up a workflow will ensure assessments are completed and can inform if formulation changes are made

Polling Question #2

Does your company have a compliance strategy that includes a formalized workflow?

Simplified Compliance Workflow





Polling Question #3

Are your compliance assessment tools integrated with your formulation and product development system(s)?

Benefits of Integrated Data

- Using integrated compliance data in a PLM system helps you become more efficient and consistent since you have all data and information in **one place** to perform assessments
 - Users from different functional groups (quality, product development, regulatory etc.) can easily assess compliance tools without system hopping
 - Data maintenance and upkeep is mandatory to remain accurate. Updates from legislative bodies need to be updated in PLM in a timely manner.
 - Integrating compliance data in PLM along with formulation and raw material information, will help you respond faster during your proactive outreach to Governing Bodies or Trade Associations. You can utilize query results to determine levels needed and impact to your products

Polling Question #4

Estimate the number of hours spent monitoring regulatory legislation changes each month

- a. 1-5
- b. 6-10
- c. 11-20
- d. 21 or more

Regulation Monitoring

- › Stay **alert** to upcoming regulation changes and emerging risks using news aggregation tools
 - Finding out that a regulation has been published once it is already in force, means you are too late
 - You will have a competitive advantage if you're prepared
- › Responding quickly to proposed changes through your business, trade associations, or NGO's can provide great benefits
- › Quickly running queries in PLM to determine the impact and provide data output to Government Bodies during comment periods
- › Keep your compliance data updated. It is crucial to remain compliant


Recap


- › Build a compliance strategy
- › Revisit the Compliance Checklist to ensure no compliance gaps
- › Develop processes and workflows
 - Including product developer check to minimize the compliance loop
 - Timing is crucial, early is best and during the key phases of a project
- › Key benefits of integrated data
- › Regulation monitoring – stay alert and consider tools to maintain accurate data


Questions?


Sandra Gebauer Kelly

Director of Regulatory and Scientific Affairs, North America
Selerant Corporation

 499 7th Avenue, Floor 18N New York, NEW YORK 10018

 Office (212) 792-8910

 (646) 272-8050

 Email: sandra.gebauer@selerant.com

www.selerant.com



selerant

Thank You!